



Addendum

2018



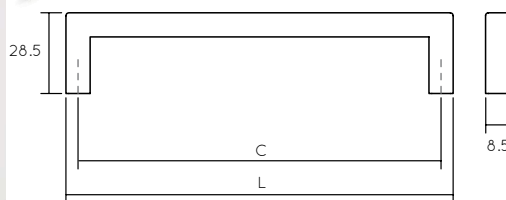
DEKKOR

FINE DECORATIVE HARDWARE

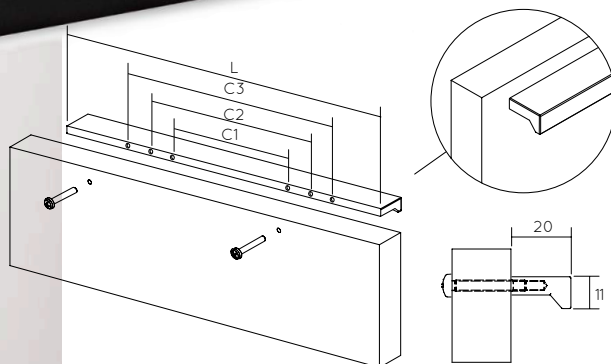
Matte Black



D205192-94



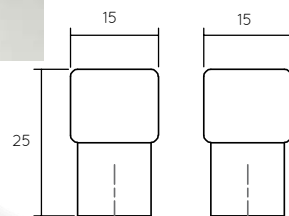
D204128-80



D205320-94



D29515-80



Ref. No	C (C1) mm	C2 mm	L mm	L inches	H mm	Box
D205128-94	128	-	136.5	5-3/8	28.5	25
D205192-94	192	-	200.5	7-7/8	28.5	25
D205320-94	320	-	328.5	13	28.5	25
D205492-94	492	-	500.5	19-3/4	28.5	25
D204128-80	128	160	200	7-7/8	11	25
D29515-80	-	-	15	9/16	25	25

80 – matte black coated aluminum 94 – matte black coated mazac

Ask about other finishes!
See 'Finishes' Pages 1&2

Fasteners Included M4 x 25

Matte Black



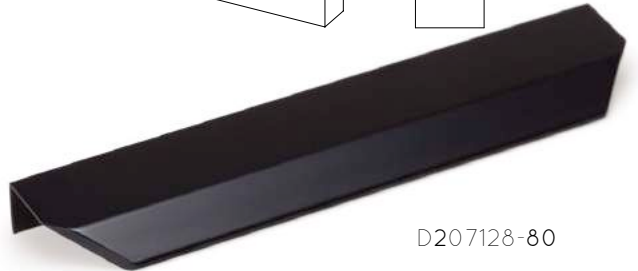
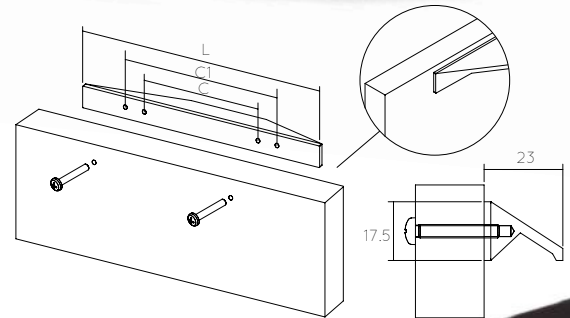
D206192-80



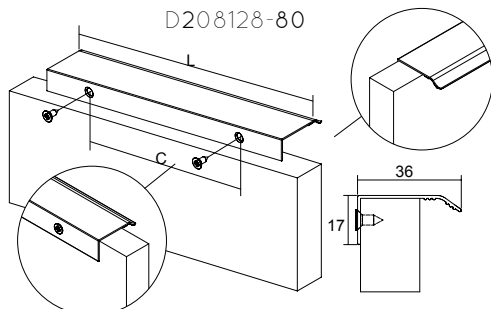
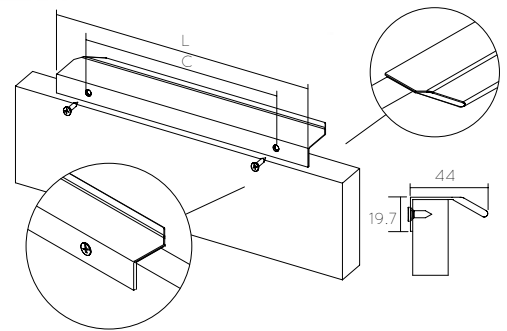
D206192-80



D206096-80



D207128-80



D208128-80

Ref. No	C mm	C1 mm	L mm	L inches	H mm	Box
D206096-80	96	128	200	7-7/8	17.5	25
D206192-80	192	320	400	15-3/4	17.5	25
D206320-80	320	480	600	23-5/8	17.5	25
D207064-80	64	-	100	3-15/16	19.7	25
D207128-80	128	-	200	7-7/8	19.7	25
D207256-80	256	-	350	13-3/4	19.7	25
D208032-80	32	-	45	1-3/4	17	25
D208128-80	128	-	200	7-7/8	17	25

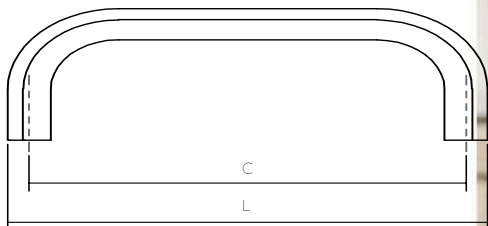
80 – matte black coated aluminum

Ask about other finishes!

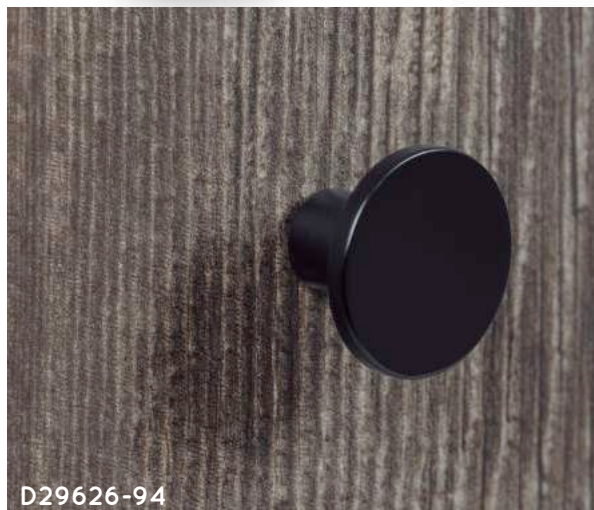
See 'Finishes' Pages 1&2

Fasteners Included M4 x 25 or Wood Screws

Matte Black



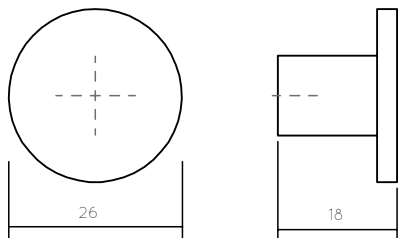
17 D209096-80



D29626-94



D209160-80



Ref. No	C mm	L mm	L inches	H mm	Box
D209096-80	96	103	4-1/16	30	25
D209160-80	160	167	6-9/16	30	25
D209256-80	256	263	10-3/8	30	25
D29626-94	-	26	1/4	18	25

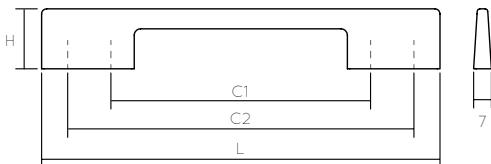
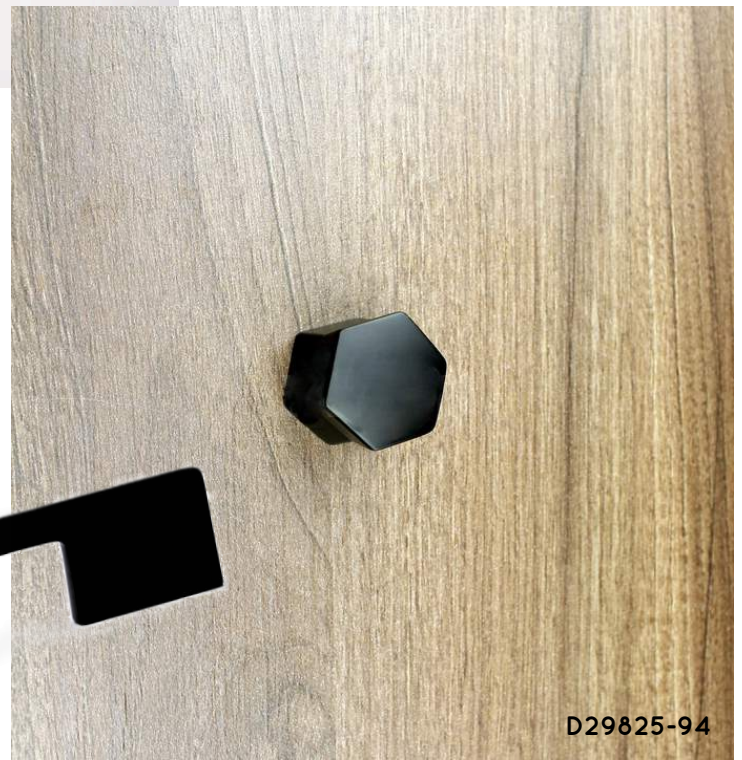
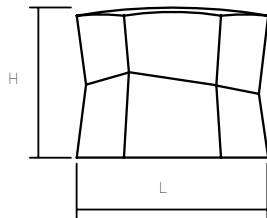
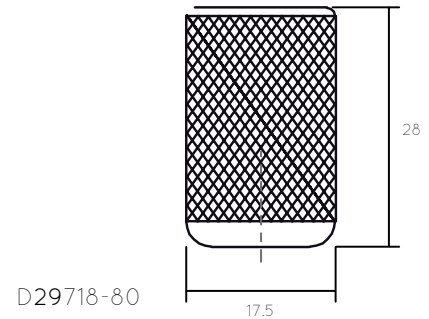
80 – matte black coated aluminum 94 – matte black coated mazac

Ask about other finishes!

See 'Finishes' Pages 1&2

Fasteners Included M4 x 25

Matte Black



Ref. No	C1 mm	C2 mm	L mm	L inches	H mm	Box
D29718-80	-	-	17.5	11/16	28	25
D210096-94	96	128	156	6-1/8	24	25
D210192-94	160	192	221	8-11/16	28	25
D210320-94	288	320	349	11-5/16	28	25
D29828-94	-	-	27.7	1-1/8	23	25

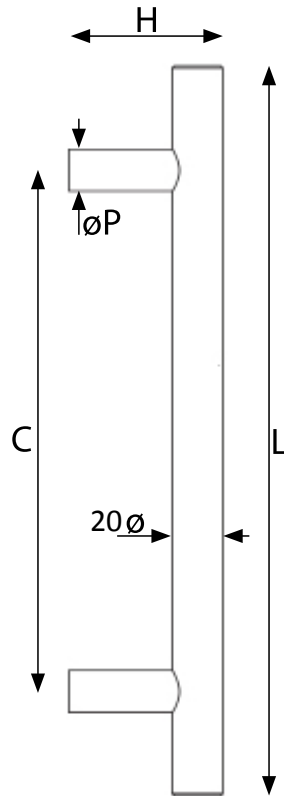
Ask about other finishes!

See 'Finishes' Pages 1&2

80 – matte black coated aluminum 94 – matte black coated mazac

Fasteners Included M4 x 25

Bar Door & Appliance Pull

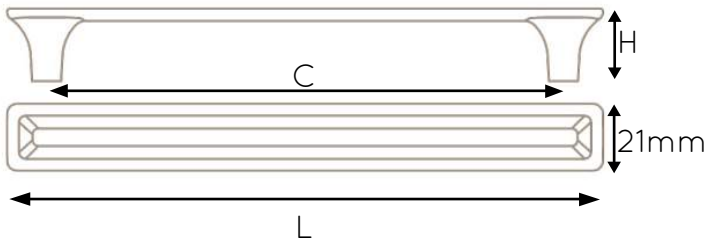
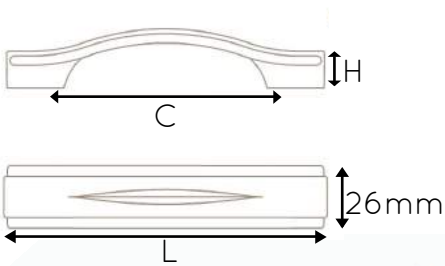


Ref. No.	Cmm	Hmm	Pmm	Lmm	L inches	Box
94250EXT-386	250	65	18	400	15-3/4	2
94250INT-386	250	65	18	400	15-3/4	2

Order 1 x EXT and 1 x INT for back-to-back set

Fasteners NOT Included: (see pages 129 - 130 of catalogue) • AISI 304 Stainless Steel with a brushed finish

Brushed Brass



Ref. No	C mm	L mm	L inches	Hmm
242128-193	128	172	6-12/16"	26
242096-193	96	136	5-6/16"	26
242032-193	32	50	2"	24
245320-193	320	344	13-9/16"	21
245160-193	160	184	7-4/16"	21
245096-193	96	120	4-12/16"	21

193 Brushed Brass

Ask about other finishes!

See 'Finishes' Page 3

Fasteners Included M4 x 25 . Mazac base with brushed brass finish

Brushed Brass



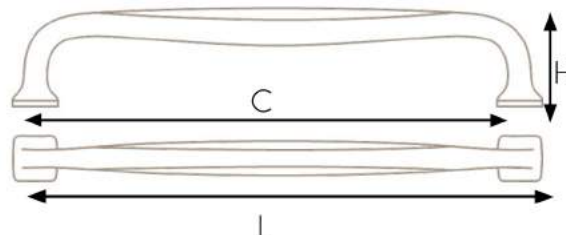
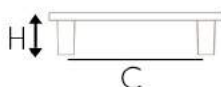
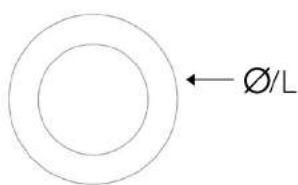
24164-193



24180-193

24164-193

24140-193



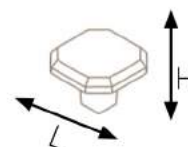
246160-193

Ref. No	C mm	L mm	L inches	Ø	Hmm
24180-193	80	100	3-15/16"	100	24
24164-193	64	80	3-1/8"	80	23
24140-193	40	52	1-9/16"	52	22
246160-193	160	175	6-7/8"	-	33
246128-193	128	143	5-5/8"	-	33
246096-193	96	111	4-3/8"	-	33
24600-193	-	32	1-1/4"	-	23

193 Brushed Brass



24600-193



Ask about other finishes!

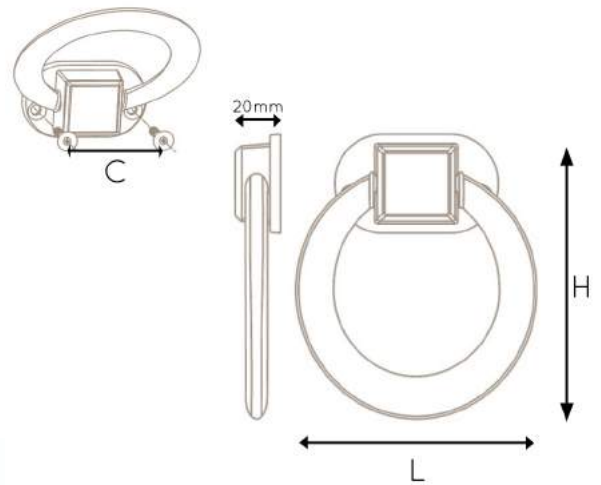
See 'Finishes' Page 3

Fasteners Included M4 x 25 . Mazac base with brushed brass finish

Brushed Brass



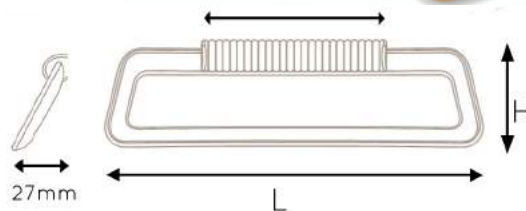
24748-193



24464-193

24432-193

24416-193



Ref. No	C mm	L mm	L inches	Hmm
24748-193	48	90	3-1/2"	108
24464-193	64	160	6-5/16"	45
24432-193	32	114	4-8/16"	45
24416-193	16	78	3-1/16"	45

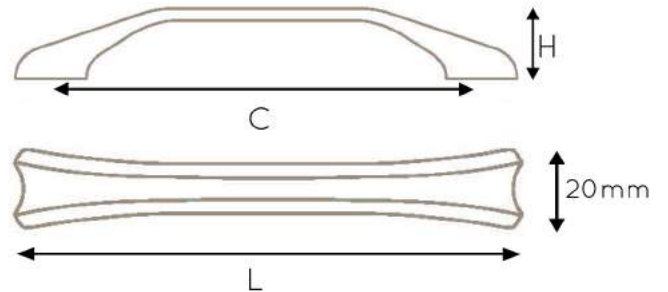
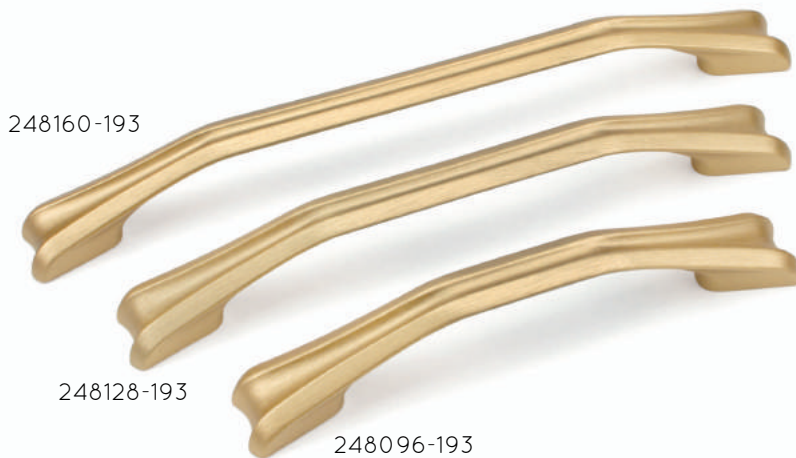
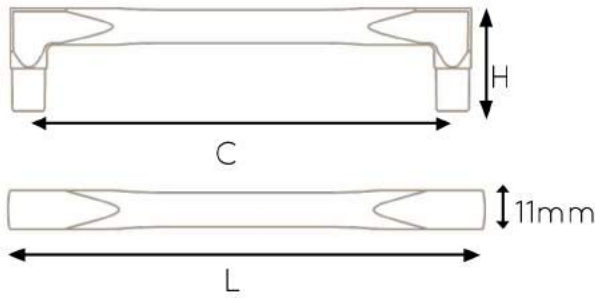
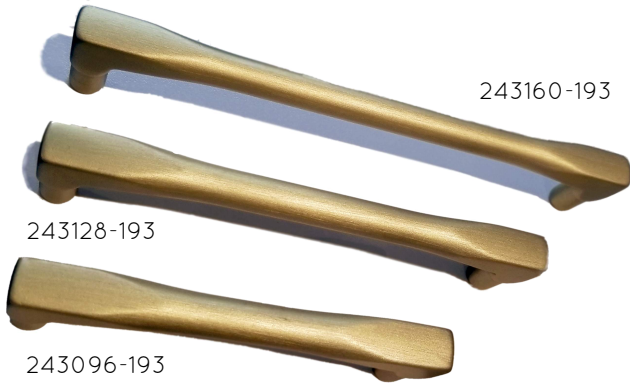
193 Brushed Brass

Ask about other finishes!

See 'Finishes' Page 3

Fasteners Included M4 x 25 . Mazac base with brushed brass finish

Brushed Brass



Ref. No	C mm	Lmm	L inches	Hmm
243096-193	96	107	4-3/16"	30
243128-193	128	139	5-1/2"	30
243160-193	160	171	6-3/4"	30
248096-193	96	128	5-1/16"	20
248128-193	128	160	6-5/16"	20
248160-193	160	192	7-9/16"	20

193 Brushed Brass

Ask about other finishes!

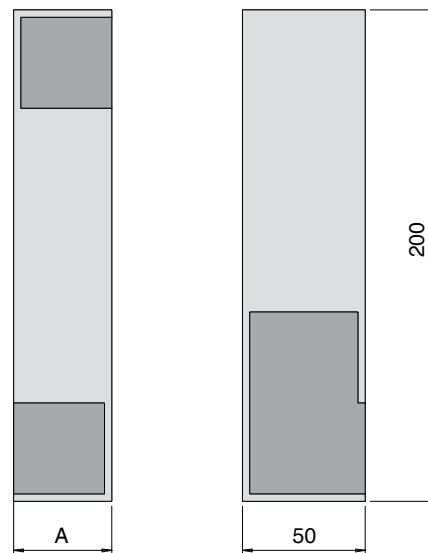
See 'Finishes' Page 3

Fasteners Included M4 x 25 . Mazac base with brushed brass finish

Kube Pocket Door Handle

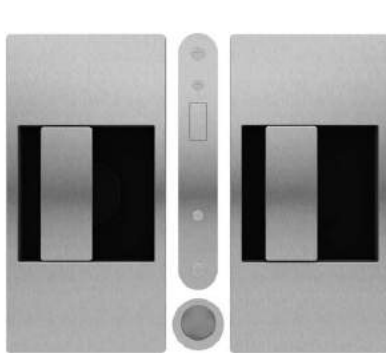


Ref. No	A mm	A inches	Box
96535-38	35	1-3/8	1
96540-38	40	1-9/16	1
96545-38	45	1-3/4	1

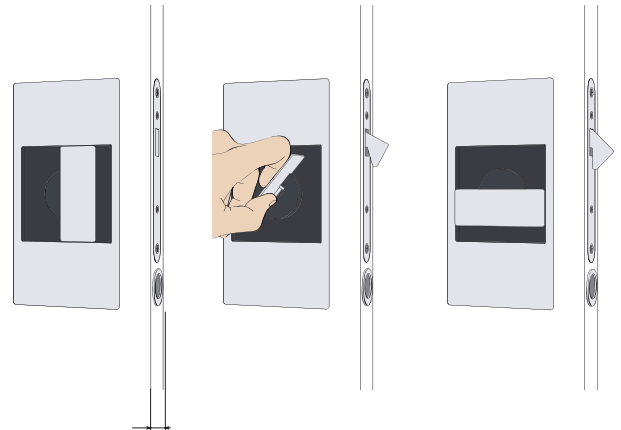
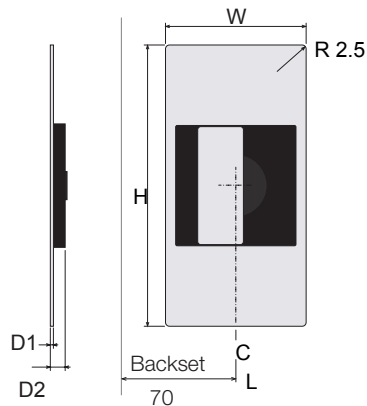


Affix with adhesive (not included) • AISI 304 Stainless Steel

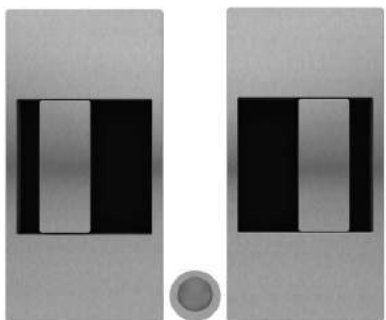
Slide Lock & Slide Handle



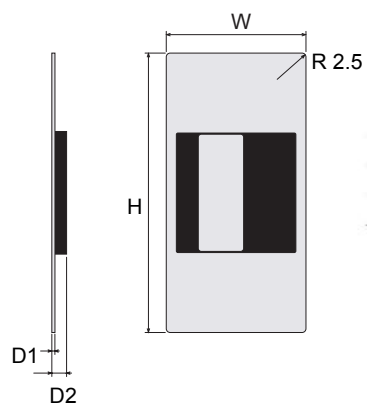
96920-38 Slide Lock



Door thickness = 35mm-40mm, 1-3/8" - 1-9/16"



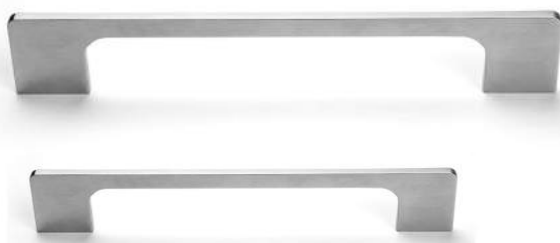
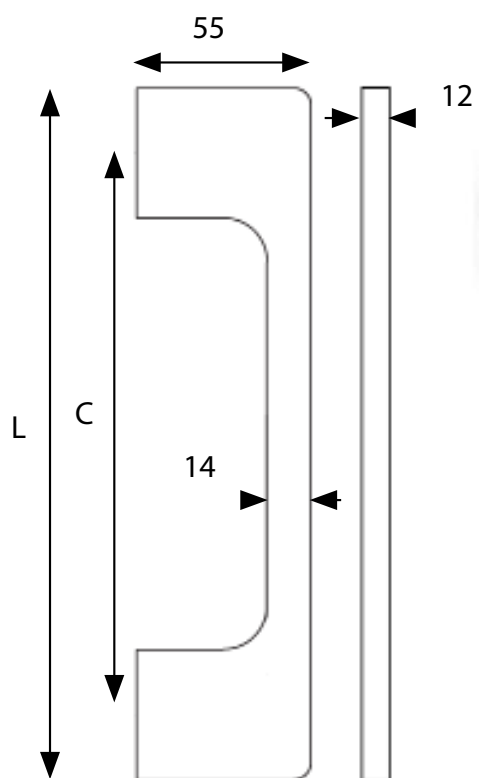
96930-38 Slide Handle



Ref. No	Hmm	H inches	Wmm	D1mm	D2mm
96920-38	180	7-1/16	90	2	9.5
96930-38	180	7-1/16	90	2	9.5

Thimble included . Stainless Steel

Thin Door & Appliance Pulls

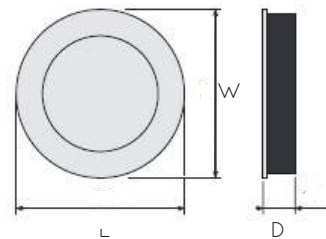
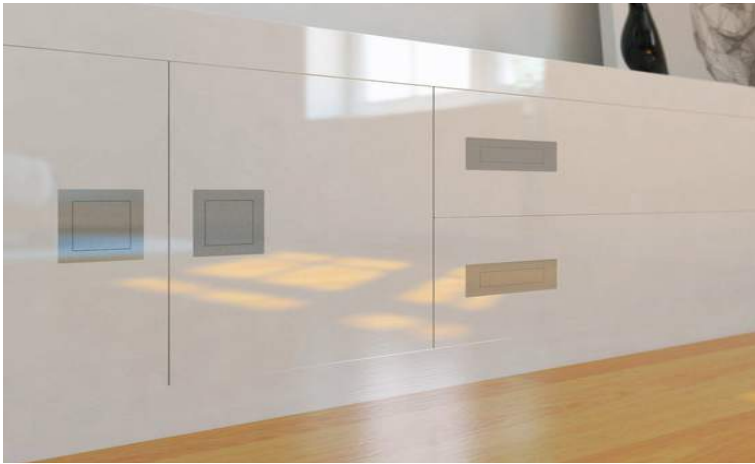


Ref. No	C mm	L mm	L inches	H mm	Box
192160EXT-38	160	196	7-3/4	55	10
192300EXT-38	300	336	13-3/8	55	5

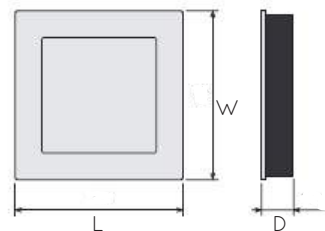
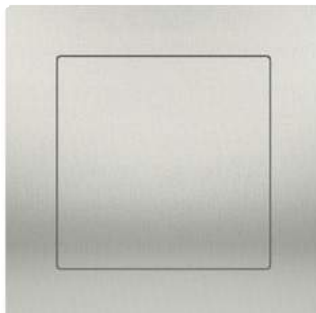
Through-mount & Appliance Pull only

Matching cabinet pull - page 20 of Catalogue

500 Series *Spring Flush Pulls*



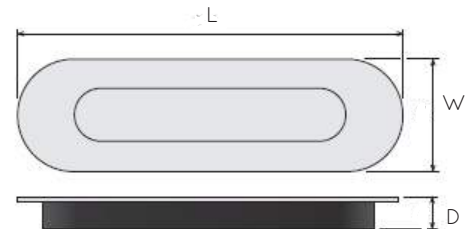
502-38-211



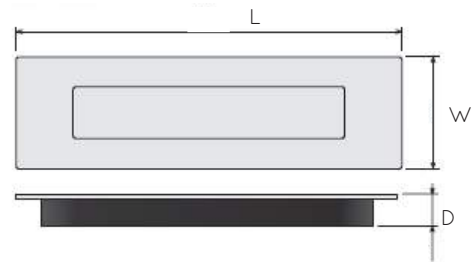
501-38-211



504-38-211



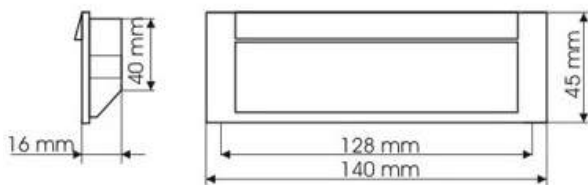
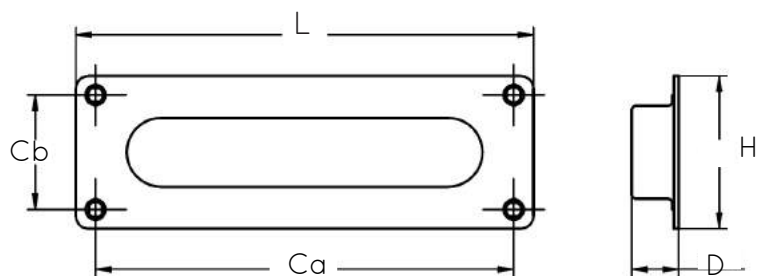
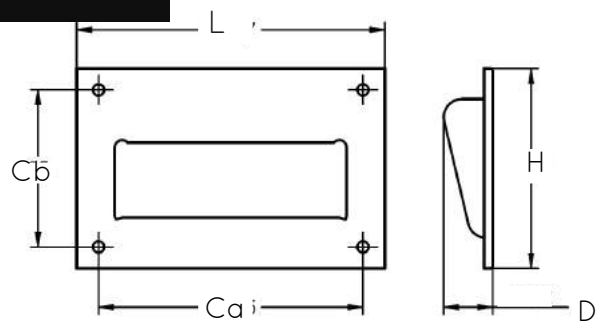
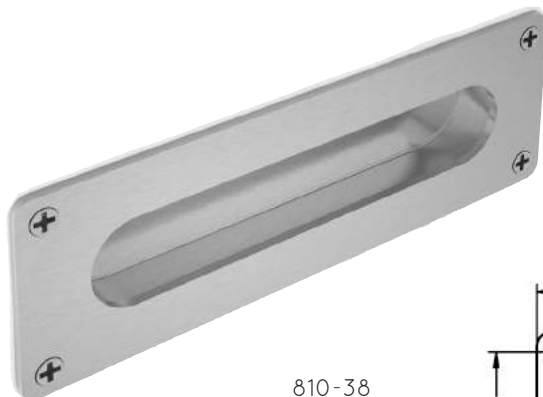
503-38-211



Ref. No	L mm	L Inches	W mm	D mm
501-38-211	75	2-5/16	75	18
502-38-211	75	2-5/16	75	18
503-38-211	75	6-1/8	45	18
504-38-211	75	6-1/8	45	18

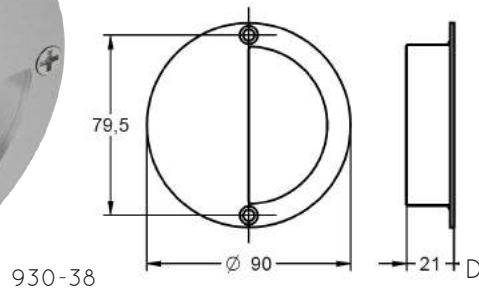
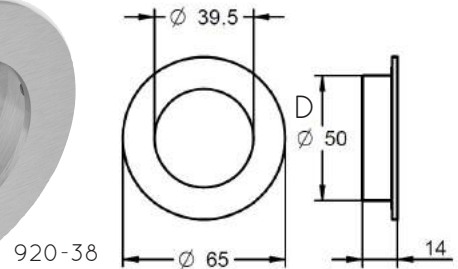
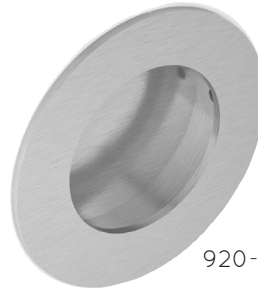
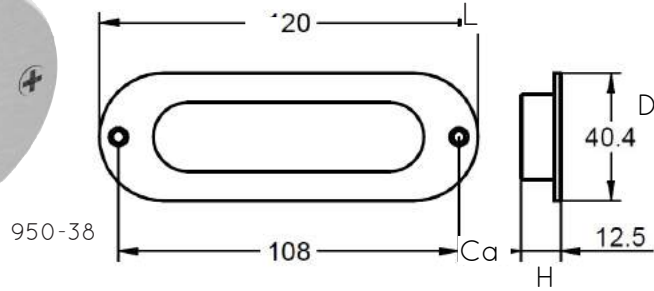
AISI 304 Stainless Steel with Plastic Components . Suitable for Furniture and Light Sliding Doors

Flush Pulls



Fasteners Included: #6x 14mm wood screw • Stainless Steel

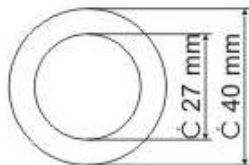
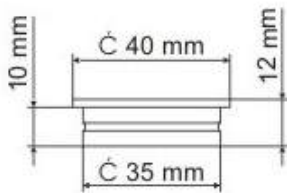
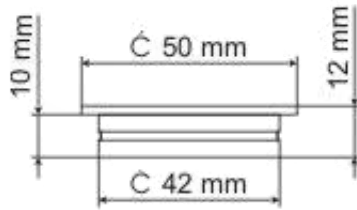
Flush Pulls



85/50-144



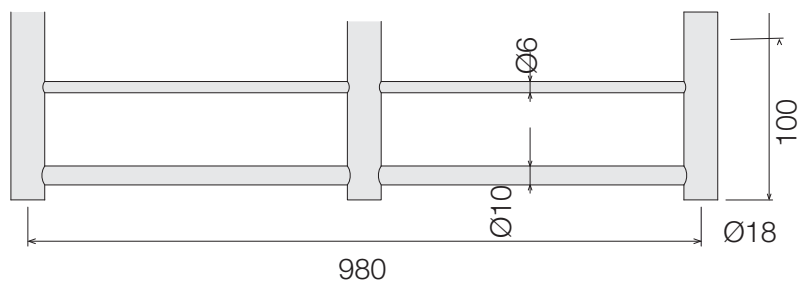
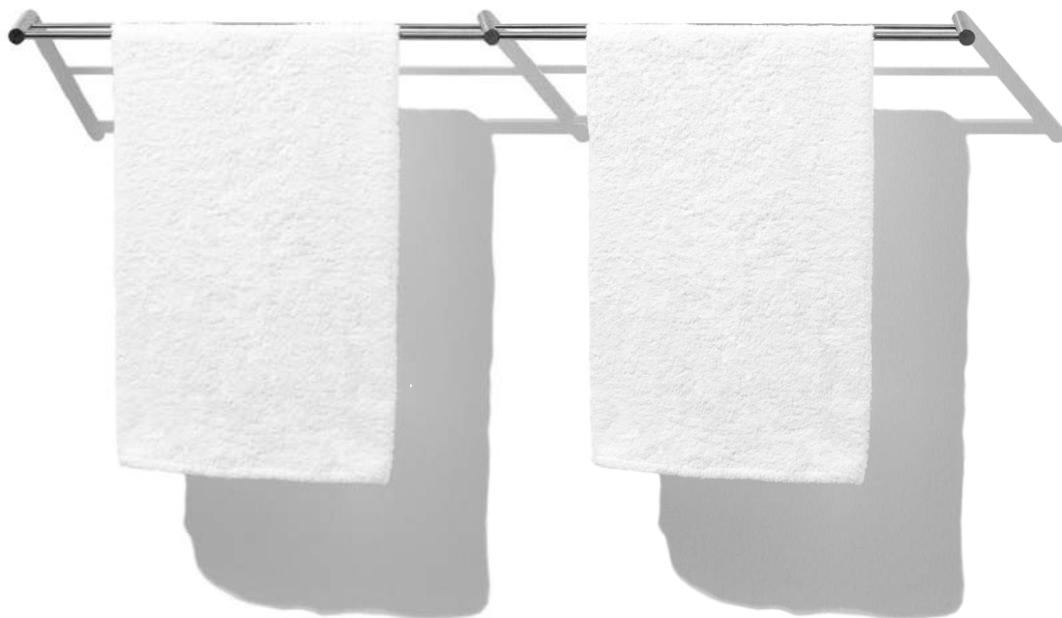
85/40-144



Ref. No	L mm	L Inches	H mm	C a mm	C b mm	D mm
810-38	180	7-1/16	60	165	45	19
840-38	128	5	83	110	65	19
920-38	65	2-9/16	65	40	-	14
930-38	90	3-9/16	90	80	-	21
950-38	120	4-3/4	41	108	-	13
50-96	140	5-1/2	40-45	128	-	16
85/40-144	40	1-9/16	12	35	40	40
85/50-144	50	1-15/16	12	42	50	50

Fasteners Included: #6x 14mm wood screw • Stainless Steel

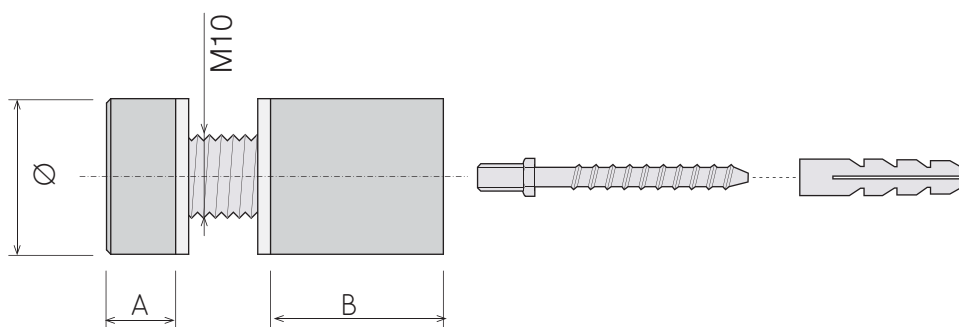
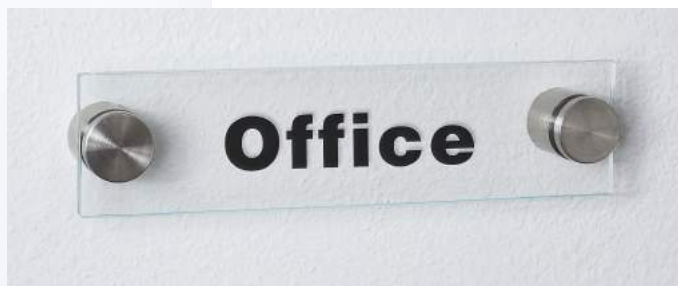
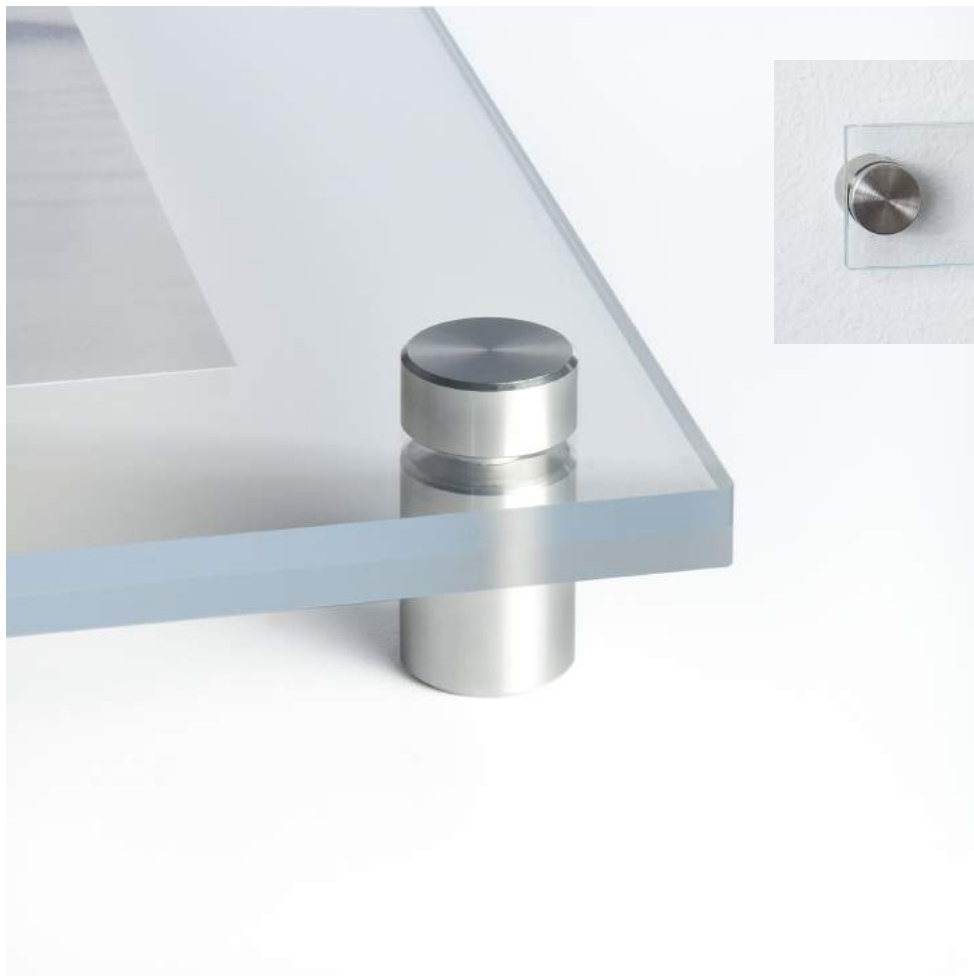
Double Towel Holder



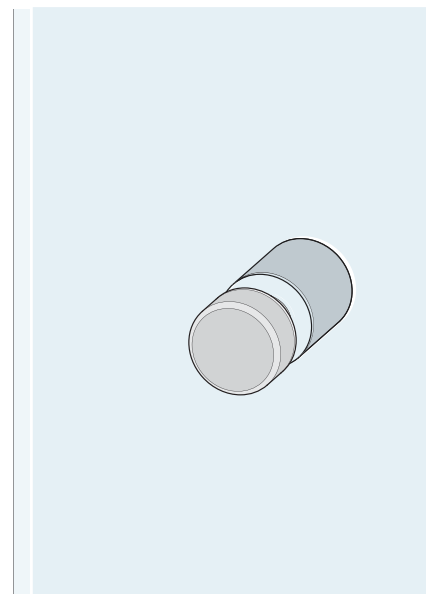
Ref. No	Length mm	Length Inches	Projection mm	Box Qty.
61315-38	980	38-9/6"	100	1

Fasteners Included

Signage Stand-Offs



Ref. No	Ø mm	Total Length	Length A	Length B	Box
1019-38	18	28mm/ 1-7/64"	8mm	20mm	20



Fasteners Included • AISI 304 Stainless Steel with a brushed finish

50000 Series *Tempered Glass*



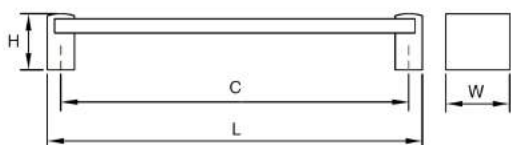
50192-700-96



50001-700-96



50160-700-96

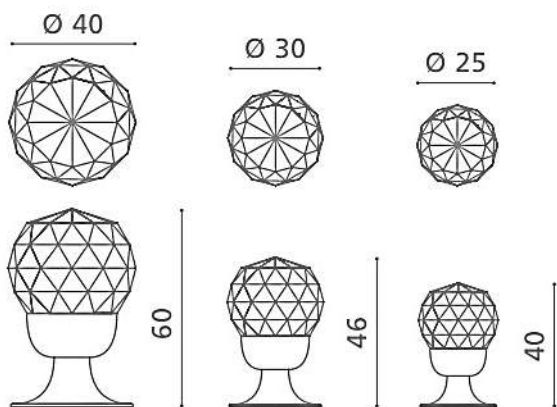
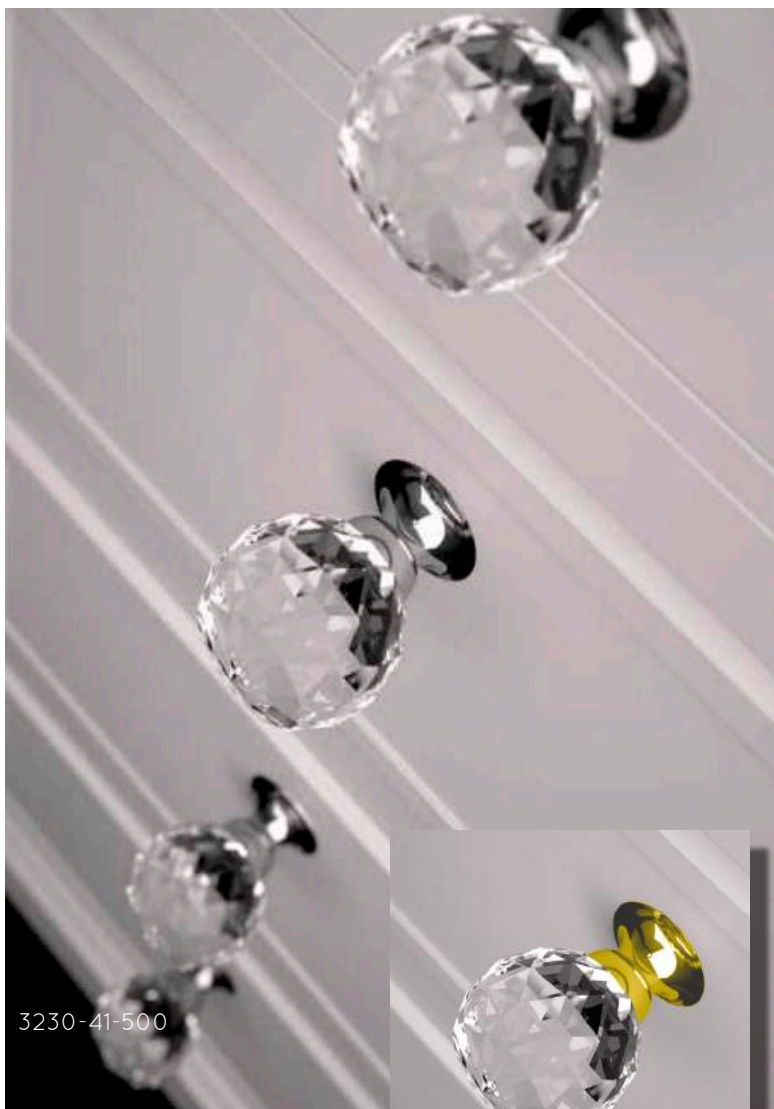


Ref. No	C mm	L mm	L inches	H mm	Wmm
50001-700-96	-	30	1-3/16	31	35
50160-700-96	160	175	6-7/8	31	35
50192-700-96	192	207	7-9/16	31	35
50320-700-96	320	337	13-1/4	31	35

96 Polished Chrome
700 Tempered Glass

Fasteners Included: M4 x 25mm

3200 Series *Cut Crystal*



Ref. No	Ø D mm	Ø B mm	H mm	H inches
3225-*-500	25	20	40	1-9/16
3225-*-514	25	20	40	1-9/16
3230-*-500	30	20	46	1-13/16
3230-*-514	30	20	46	1-13/16
3240-*-500	40	30	60	2-3/8
3240-*-514	40	30	60	2-3/8

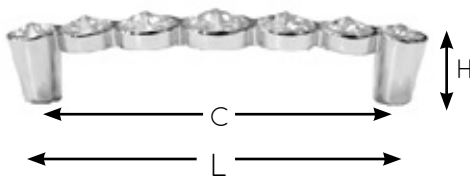
*Pedestal Finish 2 Gold Plated Brass 41 Chrome Plated Brass
Cut Crystal Knob 500 Clear Crystal 514 Opaque Black Crystal

Fasteners Included: M4 X 25mm

46000 Series *Swarovski Crystal*



MADE WITH
**SWAROVSKI
ELEMENTS**



Ref. No	L mm	L Inches	H mm	C mm
46032-*-500	48	1-7/8	21	32
46096-*-500	114	4-1/2	25	96
46128-*-500	145	5-11/16	25	128

* Pedestal Finish

96 Polished Chrome 144 Brushed Nickel 149 Black Nickel
500 Indicates clear cut Swarovski Crystal Elements

Fasteners Included: M4 x 25mm

47000 Series *Swarovski Crystal*



Ref. No	C mm	Ø1 mm	Ø2 mm	H mm
47017-*-500	-	17	-	21
47032-*-500	32	50	25	24
47064-*-500	64	86	52	24

* Pedestal Finish

96 Polished Chrome 144 Brushed Nickel 149 Black Nickel
500 Indicates clear cut Swarovski Crystal Elements

Fasteners Included: M4 x 25mm

Spice Insert

- European-designed and manufactured.
- An ideal aid for every avid cook and chef.
- Due to its variability, these inserts can be used for all kinds of drawer systems and widths.
- They give an excellent overview of all your spices and are designed to hold all types of spice cans and glass bottles.
- Anti-static, deep drawn, food-safe, 2.5mm polystyrene in matte hard rock maple



Ref. No	Max. Width mm	Max. Depth mm	Max. Width Inches	Max. Depth Inches	Box Quant.
A01.170600.MPL	600	524	23-5/8"	21"	10

Tambour Door Kits

A functional design element, Tambour doors allow for efficient storage in small or awkward spaces such as corner cabinets.

Add European style, create space and conceal clutter in kitchen, bath, or furniture designs.

Made-to-order kits are delivered pre-assembled as a convenient easy-to-install cartridge system.



Discover the Design Possibilities!



For Orders and Quotations, please use the Order form on the back

Order Form

Tambour Cabinet Doors

☐ ORDER

☐ QUOTATION

Date:	Contact:
Company Name:	P.O. No.:
Address:	E.T.A.:
	Delivery Date:
City/Prov-State:	Date Required:
Phone:	Email:

25mm/ 1" slats

Tambour assembled - plug-in unit ready to fit into cabinet

- No machining or special grooving of cabinet required
- Includes top cover profile and 2 side guiding profiles
- For vertical or horizontal application

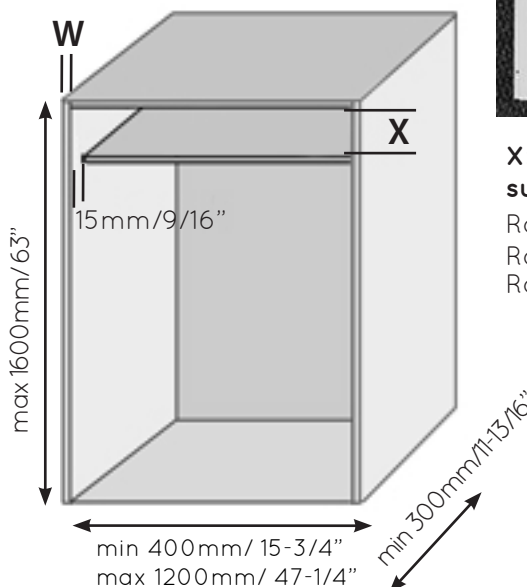
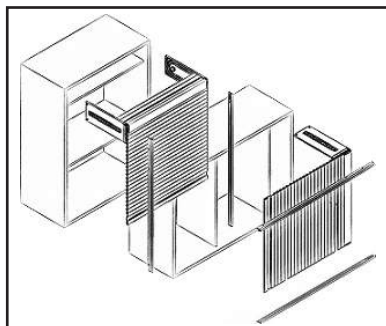
Up to height		Roll-up type	Quantity
650mm / 25-9/16"	anodized aluminum	A	
	stainless steel effect	A	
1200mm / 47-1/4"	anodized aluminum	B	
	stainless steel effect	B	
1600 mm / 63"	anodized aluminum	C	
	stainless steel effect	C	



Exterior cabinet measurements:

Height = _____ mm

Width = _____ mm



X: Distance between top & supporting shelf

Roll-up type A = 102mm/4"

Roll-up type B = 122mm/4-13/16"

Roll-up type C = 135mm/5-5/16"

☐ W = 16mm/ 5/8"

☐ W = 19mm/ 3/4"

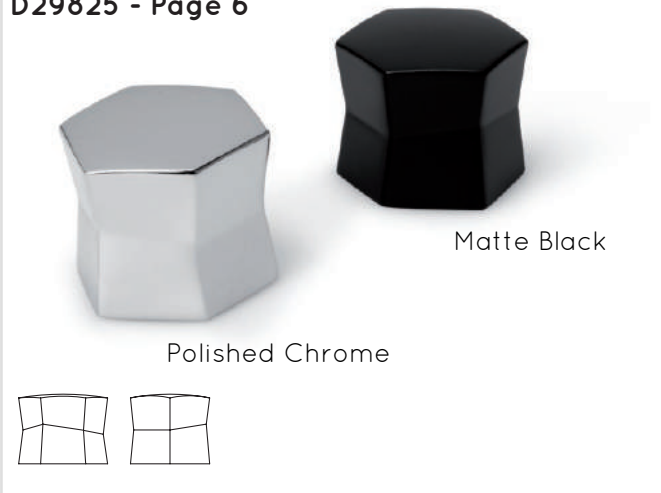
☐ with supplied handle

☐ with integrated handle strip profile (recessed groove in profile - no handle required)

Additional Finishes *

Finishes Available on Addendum Pages 3-6

D29825 - Page 6



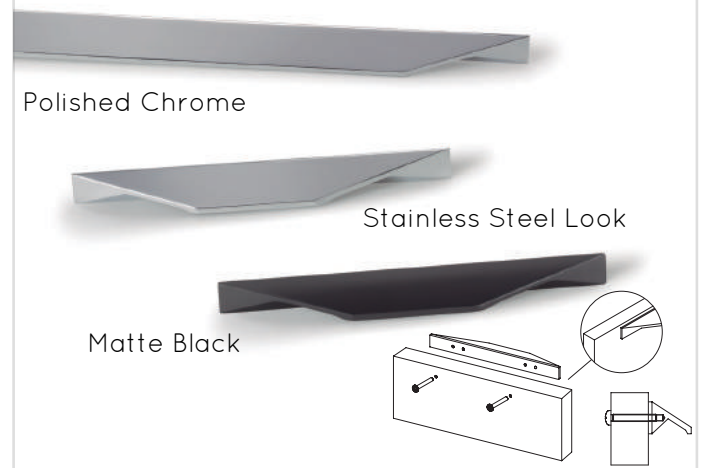
D29515 - Page 3



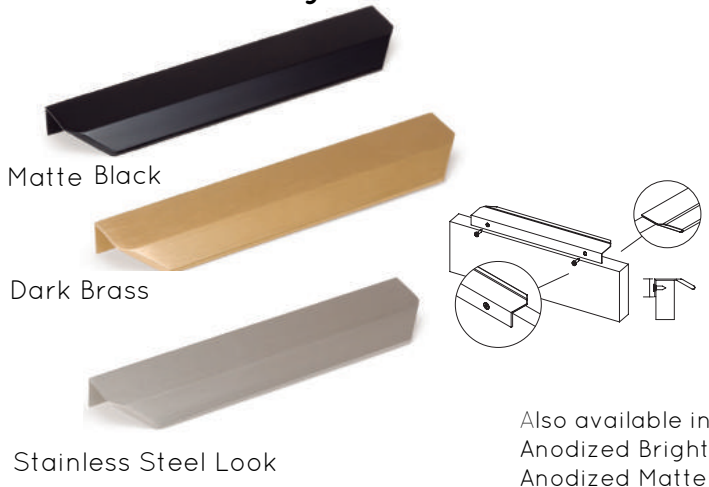
D29626 - Page 5



D206000 Series - Page 4



D207000 Series - Page 4



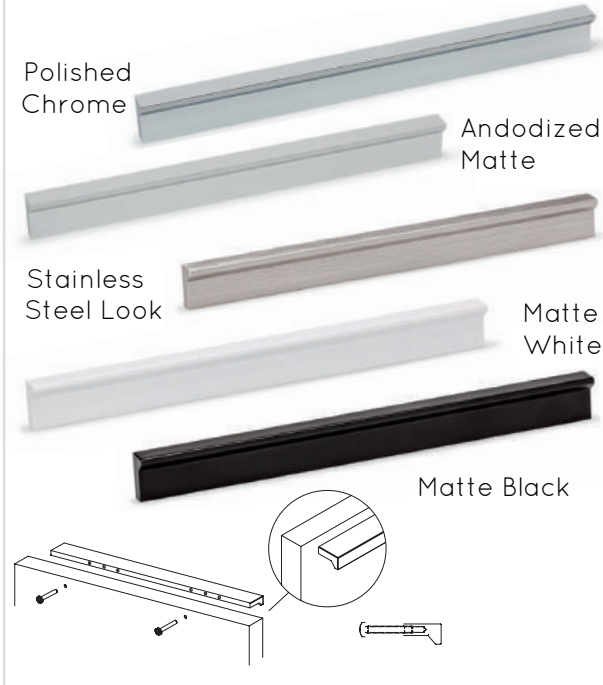
D29718 - Page 6



Additional Finishes *

Finishes Available on Addendum Pages 3-6

D204000 Series - Page 3



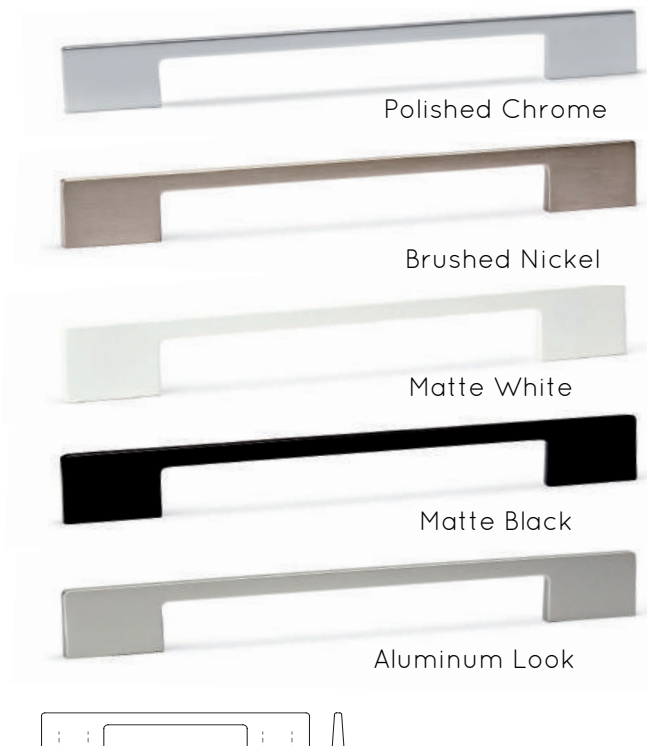
D209000 Series - Page 5



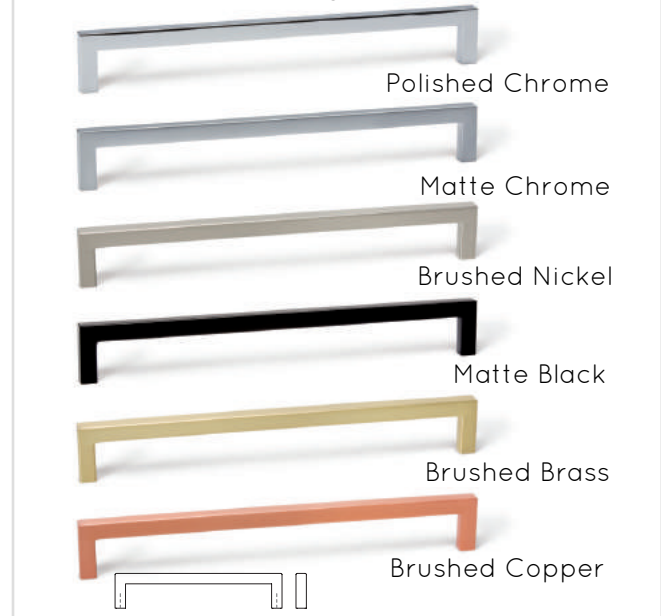
D208000 Series - Page 4



D210000 Series - Page 6



D205000 Series - Page 3



Additional Finishes *

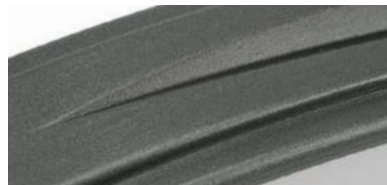
Finishes available on Addendum pages 8-11 & Catalogue pages 104-107 & 111-123:



Brushed Platinum



Brushed Bronze



Brushed Graphite



Matte Rose Gold



English Bronze



Brushed Brass



Vintage White Iron



Vintage Pewter



Vintage Black Iron



Vintage Brass



Vintage Rusty Iron



Vintage Nickel



Brushed Brown



Varnished Matte Black



Vintage Copper

* Additional Finishes on 'Finish' pages 1-3 of 2018 Addendum are not stocked in our warehouse and have a 3-6 week lead time.

Pricing may vary based on finish. Contact us for a Quote!

All styles may not be available in all finishes.

Don't see the finish you're looking for? Ask us! Contact us for more information and details!

email: service@dekkorinc.com, phone: 905-688-0444, toll free: 1-877-503-9799